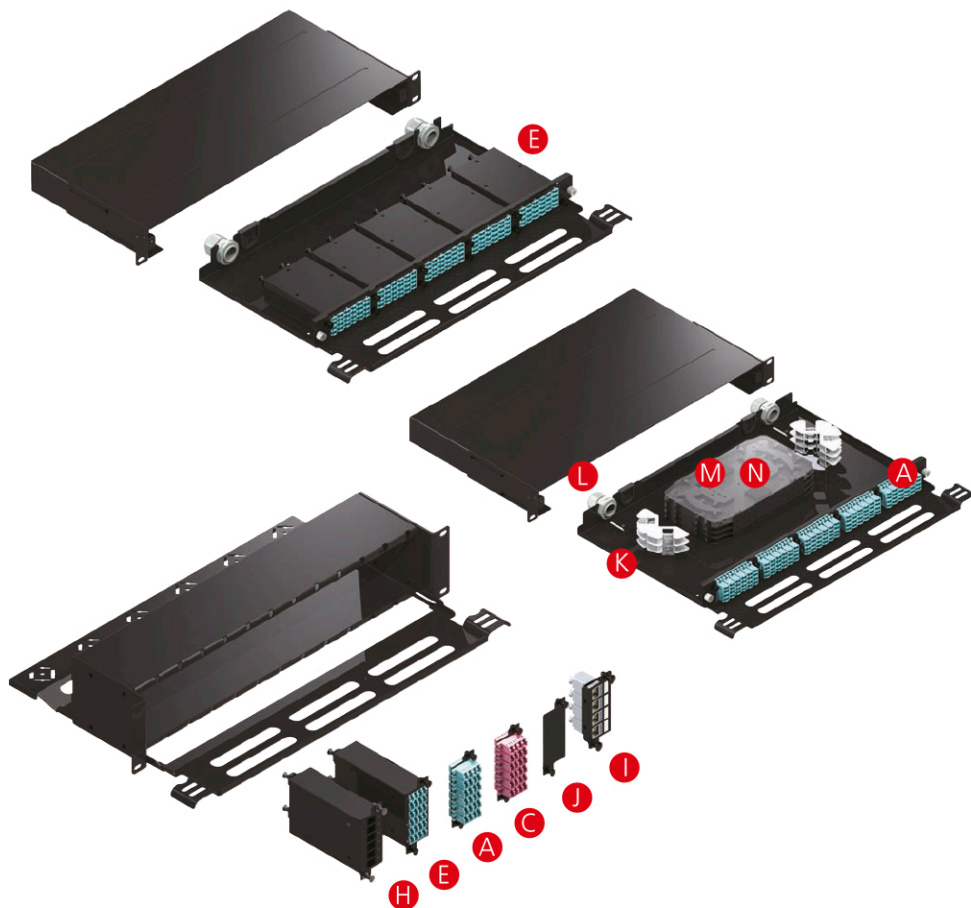


Multi-Function HD Fiber Patch Panel

Multi-Function high density fiber patch panel is constructed by flexible design to achieve diversified applications, like in-field fiber termination, pre-termination fiber cassette and RJ45 keystone termination. The maximum port number of 1U multi-function fiber patch panel is up to 120 ports.



Jälleenmyynti:

TIETOSÄHKÖ OY

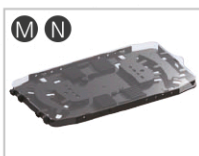
+35892925020 www.tietosahko.fi



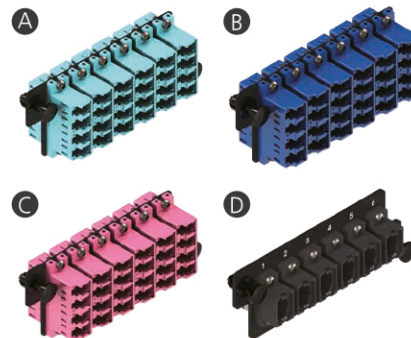
Cable Routing Spool



Cable Gland



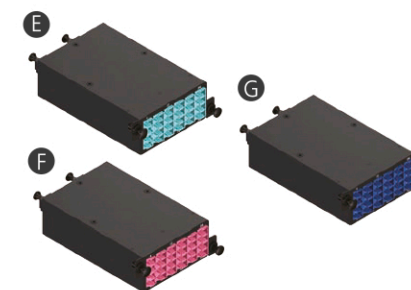
Fiber Splice Tray



24C LC Adaptor Panels

- 6 Quad LC adaptors
- Plug & Play for fast installation
- Ceramic sleeve for OM3, OM4 and SM
- Insertion loss < 0.2dB

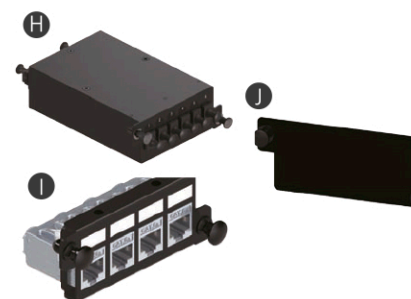
A. OM3 Aqua adaptor
B. OM4 Violet adaptor
C. SM Blue adaptor
D. MTP Adaptor



24C MTP-LC Cassettes

- 6 x Quad LC adaptors
- 2 x MTP adaptors
- 2 x 12F MTP-LC Harness
- 100% factory terminated and tested
- Low Insertion loss < 0.5dB
- Plug & Play for fast installation

E. OM3 Cassette
F. OM4 Cassette
G. SM Cassette

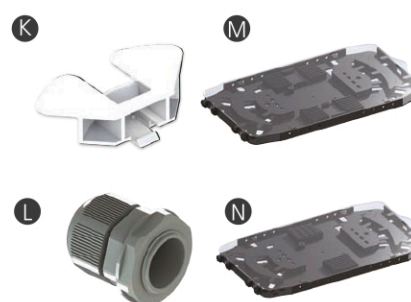


H. 40G/100G Cassette

I. 4-Port Cat.6A Keystone Jack Panels

- Full shielded by zinc alloy housing
- C6A component performance
- Fits 23-26 awg solid and stranded cable
- Fits cable O.D. 5-8mm

J. Blank Panel



K. Cable Routing Spool

L. Cable Gland

Option:

- M20 Cable O.D. 10mm-14mm
- M25 Cable O.D. 13mm-18mm

M. 12-Fiber Splice Tray

N. 24-Fiber Splice Tray